



LEADING THE WAY IN SURFACE ENGINEERING



Generations of experience

History

Established in 1931 and after three generations of private ownership, South West Metal Finishing have grown to become one of Europe's largest independently owned finishing groups.

Flexibility

With approximately 200 employees, working across 4 treatment facilities, and a truly global customer base, leading the way in surface engineering.

Diversity

SWMF have a growing property function supporting the Group, we're ideally placed to take on even the largest surface engineering projects, with full confidence in our robust financial support.



Working together

Surface treatment surfaces to aerospace and high technology

NDT

SWMF offer a full suite of NDT capabilities, from MPI, FPI, Etch Inspection to Hardness and Conductivity Testing, you can be assured your project is in the most skilled hands.

Surface treatment

SWMF offer a wide range of high-end commercial treatments with batch production capabilities. Plus, we operate to strict NADCAP & AS9100 regulations.

Paint facility

Our state-of-the-art paint facilities offer myriad benefits, including multiple spray bake systems and sub assembly capabilities.



Vision – Mission - Values

Surface treatment surfaces to aerospace and high technology

SWMF Vision

To Lead the Way in Surface Engineering

SWMF Mission

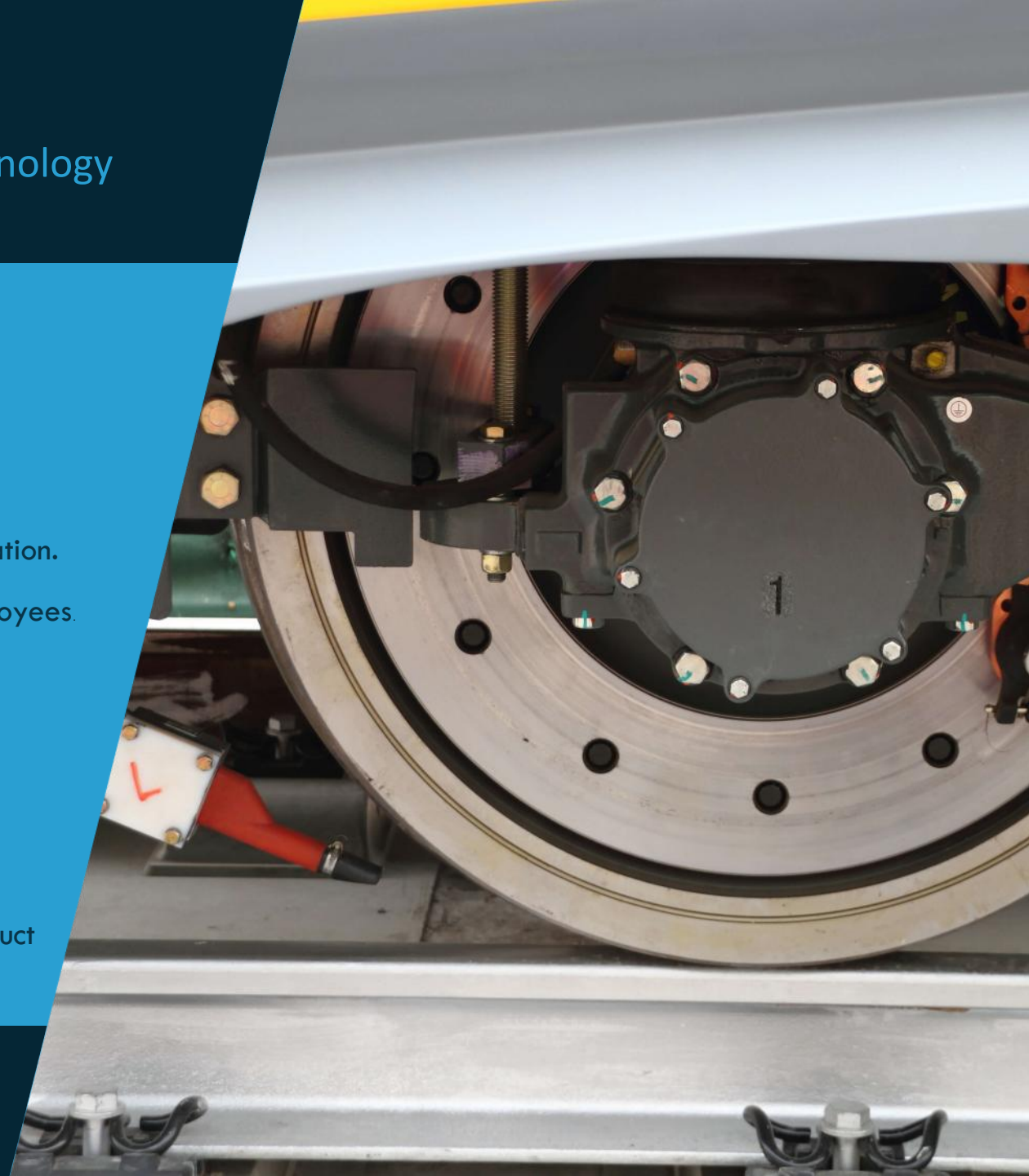
Provide industry leading surface engineering services for our customers

Continually grow through operational excellence and progressive innovation.

Safeguard the environment and ensure a rewarding future for our employees.

SWMF Values (**PRIDE**)

- P**assion - Belief in what we do and a strong will to succeed
- R**espect - Open mutual trust and respect for colleagues, customers, suppliers, neighbours and the environment
- I**nnovation - Embracing new technology, continually improving and providing technical solutions
- D**edication - To our customers, staff, the environment and the end product
- E**xcellence - In our service levels, delivery, cost and quality



SWMF Exeter Marsh Barton facility

Capabilities offered

Facility

30,000 Sq Ft
110 Employees
Onsite laboratory
Onsite Testing

Processes

NDT
Electroplating
Electroless Plating
Anodising
Conversion Coatings
Chemical Milling
Masking
R&D

Training

In-house training
Program
IMF courses available
Apprenticeship Scheme

Approvals

AS9100
ISO 14001
NADCAP (CP + NDT)
F4N
Most major aerospace
companies

Location

Within 15 mins of
Junction 31 M5 Exeter

Industries

Aerospace
Defence
Nuclear
Oil & Gas
Medical
Motor Sport



SWMF Yeovil facility

Capabilities offered

Facility

15,000 Sq Ft
20 Employees
Onsite laboratory

Processes

NDT
Electroplating
Anodising
Conversion Coatings
Paint
Masking

Training

In-house training
Program
IMF courses available
Apprenticeship Scheme

Location

Within 15 mins of A303
Yeovil

Approvals

AS9100
ISO 14001
NADCAP (CP + NDT)
Major aerospace
companies

Industries

Aerospace
Defence
Oil & Gas
Nuclear



SWMF Exeter Paint facility

Capabilities offered

Facility

15,000 Sq Ft
30 Employees
Onsite laboratory

Processes

Prime
Top Coat
DFL
Conversion Coatings
Masking
Light Assembly

Training

In-house training
Program
IMF courses available
Apprenticeship Scheme

Approvals

AS9100
NADCAP
Major aerospace
companies

Location

Within 15 mins of J29
M5 Exeter

Industries

Aerospace
Defence
Oil & Gas
Nuclear
Medical
General Eng



SWMF Chippenham facility

Capabilities offered

Facility

16,000 Sq Ft
25 Employees
Onsite laboratory

Processes

Electroplating
Electroless Plating
Anodising
Conversion Coatings
Masking

Training

In-house training
Program
IMF courses available
Apprenticeship Scheme

Approvals

ISO9001
ISO 14001

Location

Within 30 mins of
Junction 17 M4 Bath

Industries

Rail
Defence
Metrology
Switchgear
Oil & Gas
Medical
General Eng



Our guiding principles

SWMF 7 PILLARS STRATEGY



Strategic partnerships

The partner of choice

Quality

With robust NPI and AQP protocols, as well as a raft of aerospace accreditations, SWMF work to the highest quality standards. In recent years, 99.8% of all projects were delivered successfully.

Delivery

SWMF offer industry-leading OTIF delivery rates and rapid turnaround times. Clients benefit from our large available capacity and fully owned transport network.



Service

All SWMF clients enjoy Single Point of Contact project management, as well as regular KPI reviews. They also benefit from our in-house R&D solutions and REACH support.

Cost

Being an SWMF customer comes with a host of cost benefits, including Design for Manufacture support, smart tooling and numerous CI initiatives.

Finishing capabilities

An extensive range of coating services

Electroplating

Hard Chrome
Nickel
Cadmium
Diffused Nickel/Cadmium
Copper
Sulphamate Nickel
Electroless Nickel
Silver
Tin
Zinc/ Nickel Alloy
Zinc

Anodising

Chromic
Hard
Hard / PTFE
Sulphuric
TSA, PSA



Conversion Coatings

Chromate conversion
Passivation
Phosphating
Almbrite™

Paint

Wet paint
Primer
Top-coat
Dry Film Lube (DFL)
Light Assembly

Testing

Hardness Testing
FPI – Fluorescent Penetrant Insp
MPI – Magnetic Particle Insp
Acid Etch Inspection
Conductivity Testing
Salt Spray & Humidity Testing

Almbrite

Surface treatment for additive manufacturing



almbrite™

additive layer surface technology

Enhanced surface finish

Refines the surface

Achieves a roughness of below 3.2Ra

Produces an even Ra regardless of geometry complexity

Enhanced detail definition

Removes supports

Removes the need to machine support structures

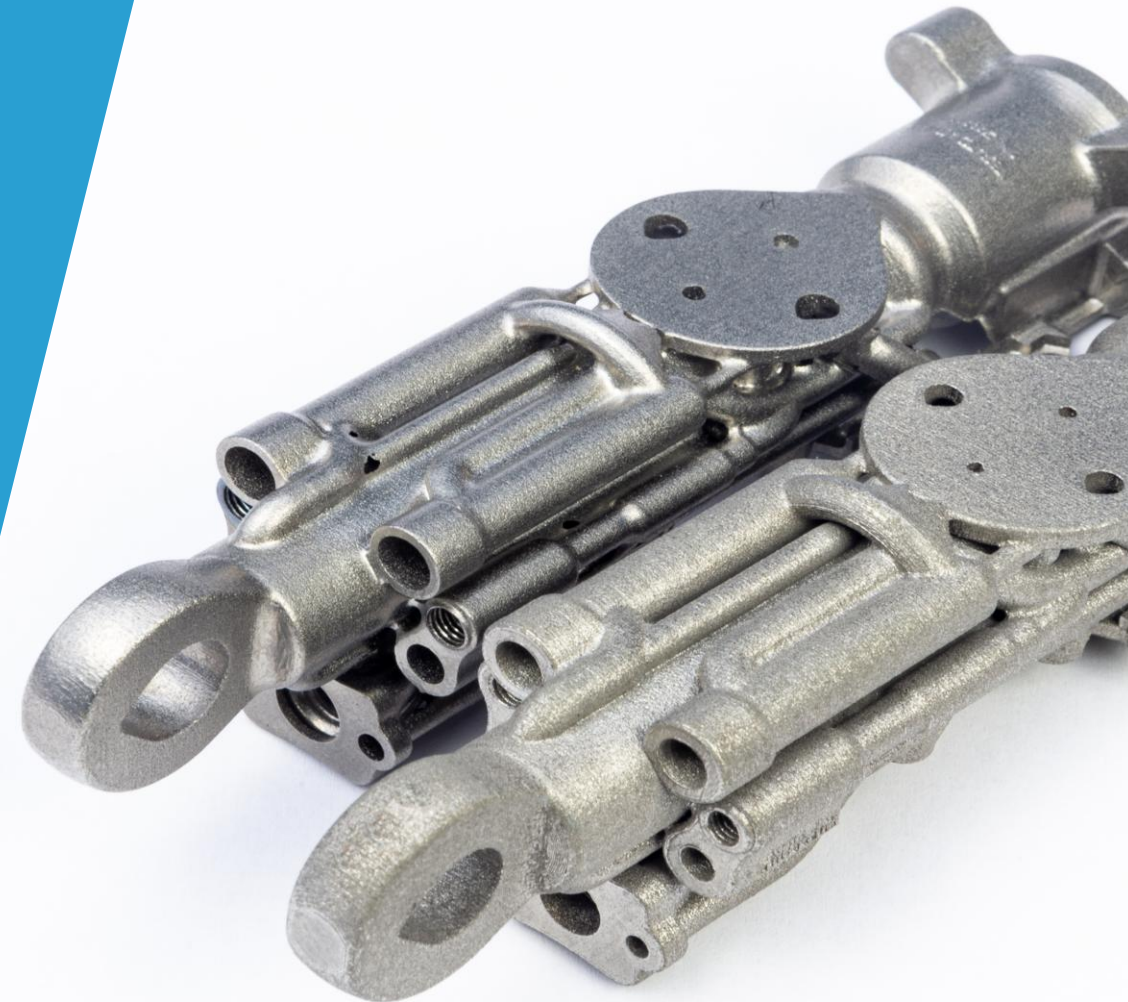
Improves performance

Improves fatigue strength

Removes contamination

Improves aesthetics and surface related functionalities

REACH Compliant



Approved and accredited

SWMF hold a wide array of industry approvals and accreditations

AIRBUS
GROUP

 **BOEING**


LOCKHEED MARTIN

RENISHAW 

 **Rolls-Royce**

EAT•N

BAE SYSTEMS



 **LEONARDO**

 **Collins
Aerospace**

 **SAFRAN**
AEROSPACE · DEFENCE · SECURITY



 **Nadcap**
Administered by PRI

F4N
Fit For Nuclear

 **SHARING IN
GROWTH**

South West 
Metal Finishing



Thank you

